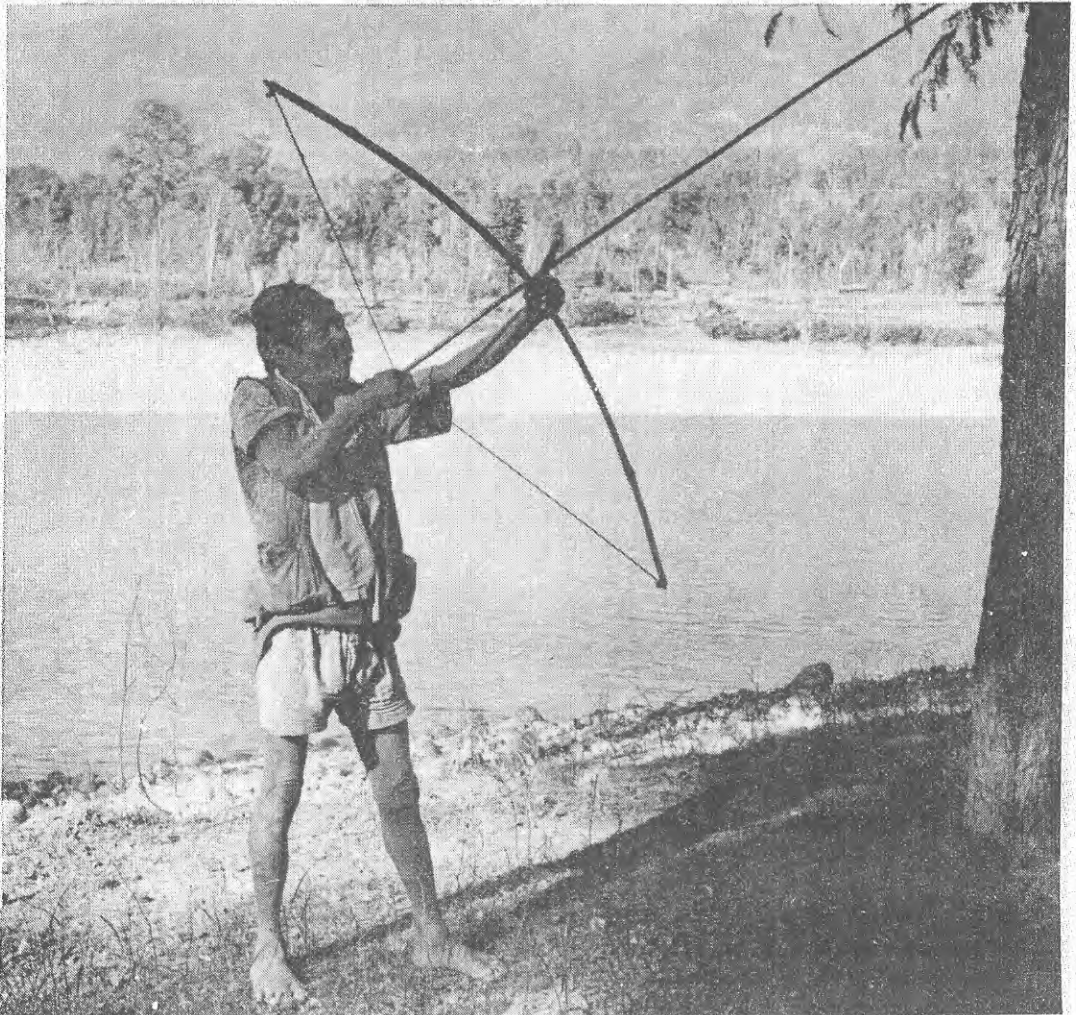




journal of the institute of nepal and asian studies
tribhuvan university
inas

contributions to nepalese studies



vol. 4, no. 1 december, 1976 (poush, 2033)

Articles on Social Sciences and Humanities on Nepal are published in this Journal. Papers, review articles and short reviews of new books on Nepal are welcome from both Nepali and foreign contributors.

Articles should be original, written in either English or Nepali language.

They should be neatly typed in double-space leaving a margin of 1½" on either side of the page.

References cited and other notes should be given at the end of article and reference numbers in the text should be given in sequence.

References cited should be complete, with the full name of the author, full title of the work, publishers' name, place of publication and year of publication. In the case of articles, the full name of the journal or magazine referred to should also be given, as well the page numbers in which the article appears.

Editors reserve the right of refusing to publish papers submitted to it without giving reason.

Published articles are remunerated, but the INAS retains the copyright to all articles submitted.

The opinions expressed in the articles or reviews are the author's own and do not necessarily reflect the views of the publisher or the editorial board.

Photographs and line drawings can be sent for illustration purposes. Photographs should be clear, glossy prints.

Contributors of articles will receive fifteen off-prints of their article. Additional copies can be prepared on request, on a cost per page basis.

All material for publication in the Journal should be addressed to: The Editor, Contributions to Nepalese Studies, Institute of Nepal and Asian Studies, Tribhuvan University, Kirtipur, Kathmandu, Nepal.

Subscription rates can be revised at any time without prior notice. Subscription requests should be sent to the address given above for papers. Subscriptions are to be sent in the form of bank drafts or crossed - cheques in favour of the Institute, for Contributions to Nepalese Studies, to the Kirtipur Branch of the Nepal Bank Limited. Rates are as follows:

(For surface mail only)

	<u>Annual</u>	<u>Per copy</u>
Nepal N. Rs.	25/-	15/-
India, Sikkim, Bhutan, Bangladesh, Burma..... I. Rs.	25/-	15/-
Other countriesthe equivalent of US. \$	6/-	3/50

(Air mail rates will be sent on request)

Printed by University Press

Tribhuvan University, Kathmandu.

contributions to nepalese studies

Chief Editor

Dr. Prayag Raj Sharma (Dean)

Editorial Board

Navin Kumar Rai

Dhanabajra Bajracharya

Andrew E. Manzardo (Advisor)



journal of the
institute of nepal and asian studies
tribhuvan university
kirtipur, nepal
inas

contents

The Ban Rajas - A Vanishing Himalayan Tribe	(Johan Reinhard)	1-22
The Kinship Basis of a Nepalese Rural Ward	(Ferdinand E. Okada)	23-38
The Early History of Lo (Mustang) and Ngari	(David P. Jackson)	39-56
The Origins of <u>sTod-Pa</u> : A Nyinba Clan Legend	(Nancy Levine)	57-75
Generative Phonology and the Aspirated Consonants of Colloquial Maithili.....	(Ramwatar Yadav)	77-91
Book Reviews		93-100
Mahesh C. Regmi, <u>Landownership in Nepal</u>	(L.F. Stiller, S.J.)	
Nagendra Sharma, <u>Nepali Janajivan</u>	(Navin K. Rai)	